

# BLUEWATER SPIRIT HOW TO USE GUIDE

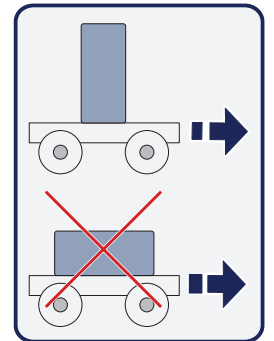


BLUEWATER

**BLUEWATER SPIRIT  
HOW TO USE GUIDE**



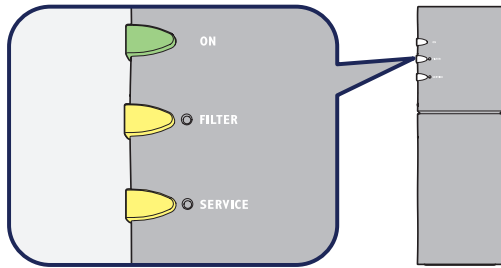
You'll find everything you need to know regarding how to use your new Bluewater Spirit purifier in this How to use Guide. Or scan the QR code for a user-friendly online version of the guide.



# How to take care of your Bluewater Spirit

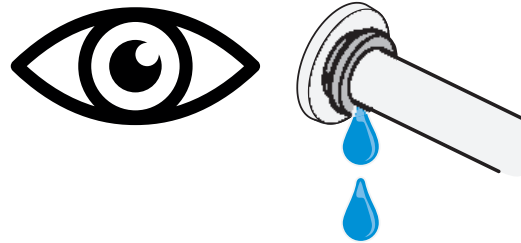
## Check the indicator lights

- Regularly



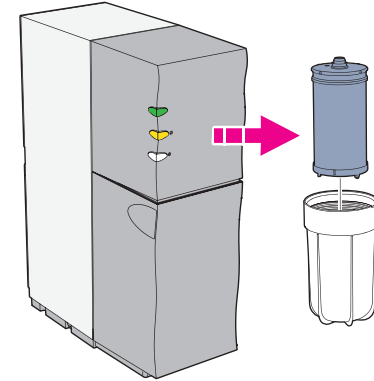
## Check for leaks

- Regularly



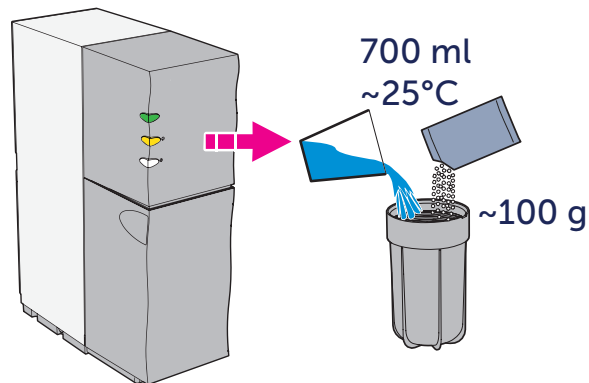
## Change your prefilter

- Every 6th month or when the filter indicator is blinking



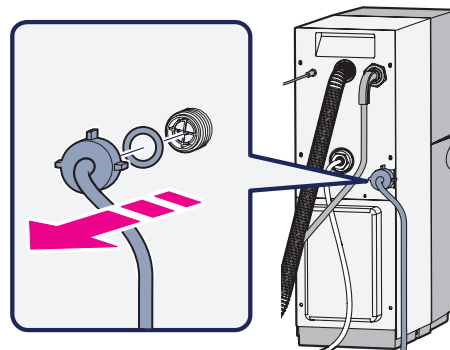
## Descaling

- Every 6th month



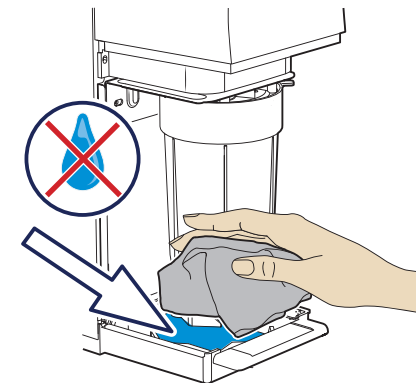
## Clean the grid filter

- Once a year

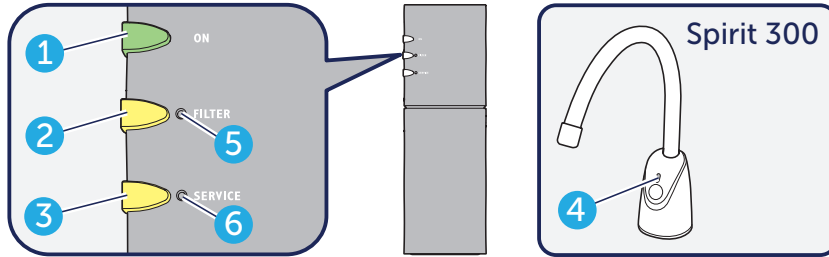


## Wipe off condensation from base plate

- When necessary

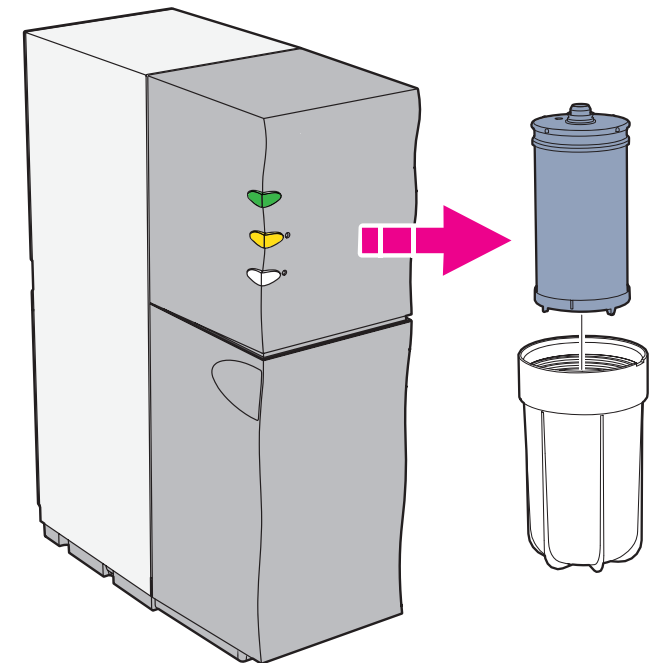


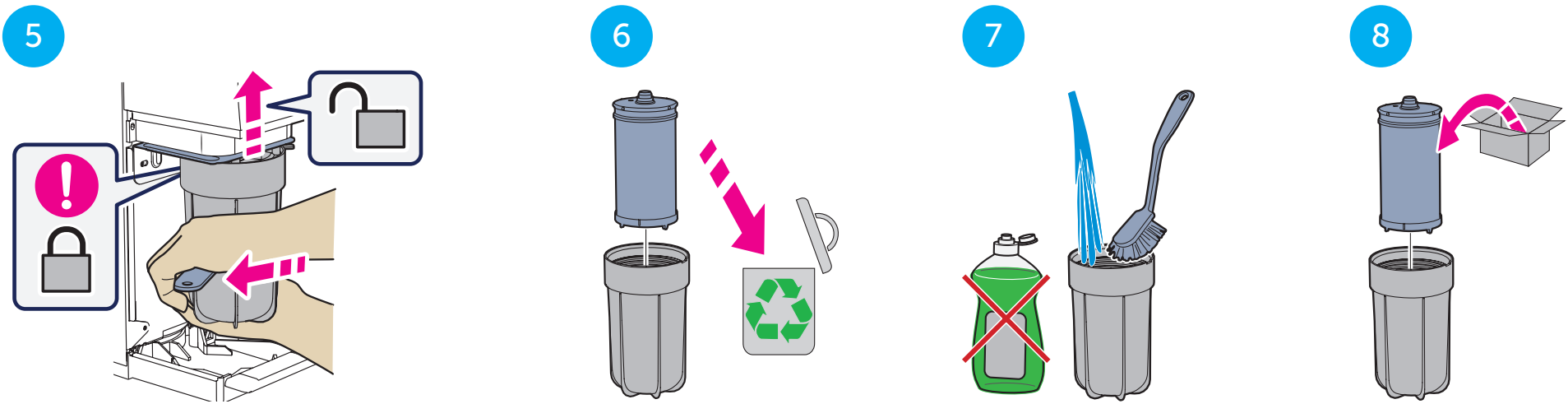
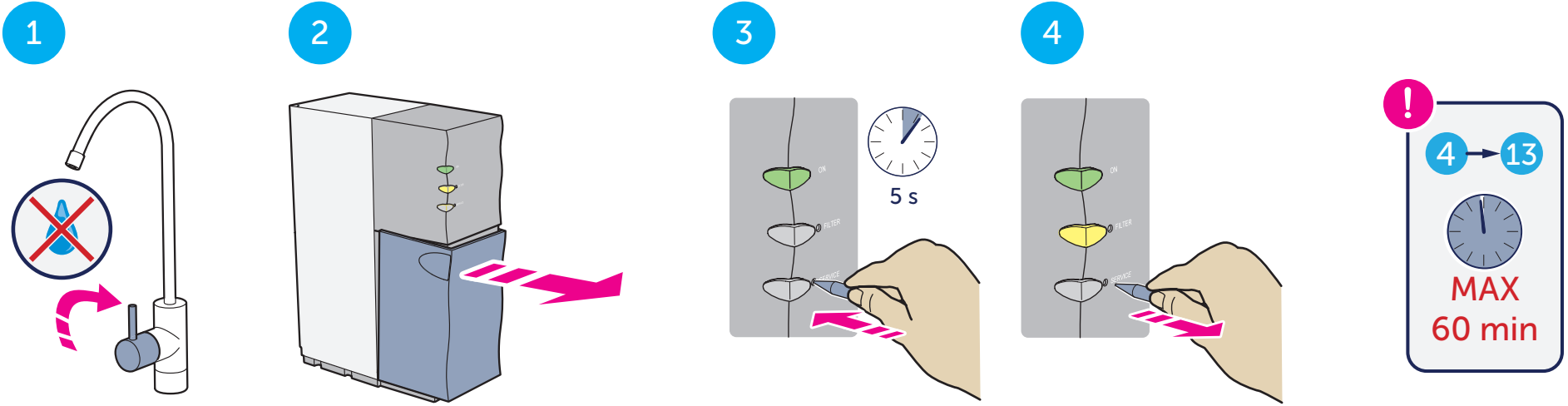
## Check indicators lights



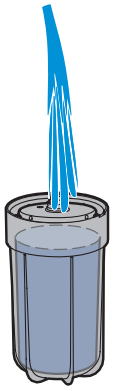
|       |                          |                  |  |
|-------|--------------------------|------------------|--|
| 1     | ON light                 | On:              | The water purifier is connected and operates correctly.          |
| 2     | FILTER light             | Flashes quickly: | The feed water pressure is too low.                              |
|       |                          | Flashes:         | The water purifier operates. The filter must be replaced.        |
|       |                          | On:              | The water purifier has stopped. The filter must be replaced.     |
| 3     | SERVICE light            | Flashes quickly: | The water quality meter does not function.                       |
|       |                          | Flashes:         | Decreased water quality.   |
|       |                          | On:              | The water purifier has stopped. The water quality has decreased. |
| 2 & 3 | FILTER and SERVICE light | Flashes quickly: | There is a water leakage or condensation on the base plate.      |
| 4     | Faucet lights            | Green:           | Shows good water quality (this can take up to 120 seconds).      |
|       |                          | Flashes yellow:  | The water quality has decreased. Wait for the green light.       |
|       |                          | Yellow:          | The water purifier has stopped. Look at the control panel.       |
| 5     | FILTER button            |                  |  |
| 6     | SERVICE button           |                  |  |

## Change the prefilter

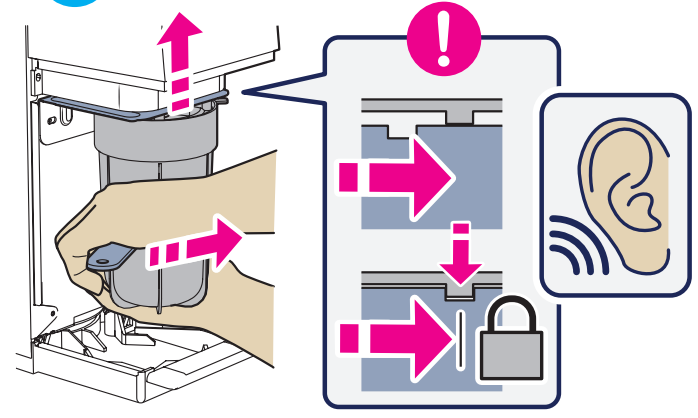




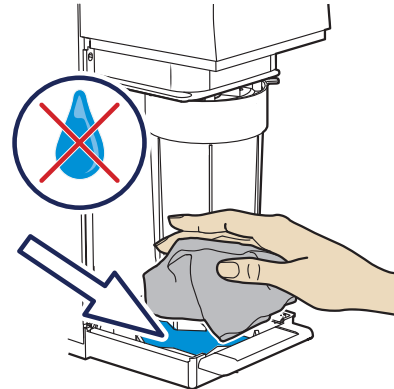
9



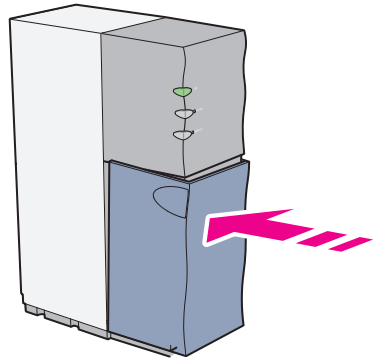
10



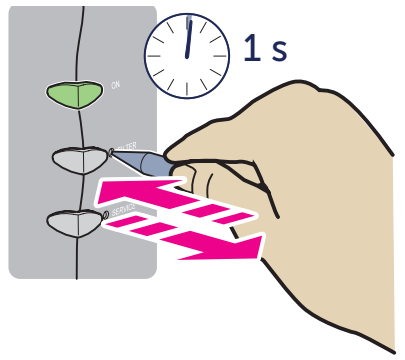
11



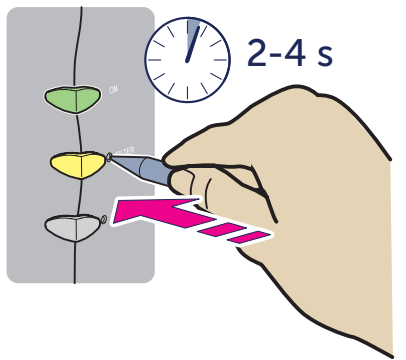
12



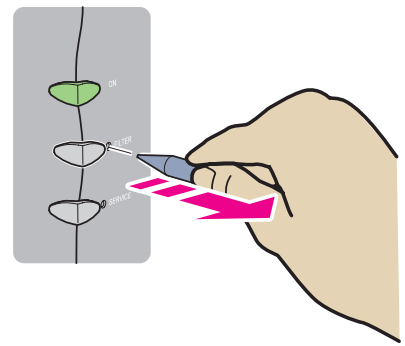
13



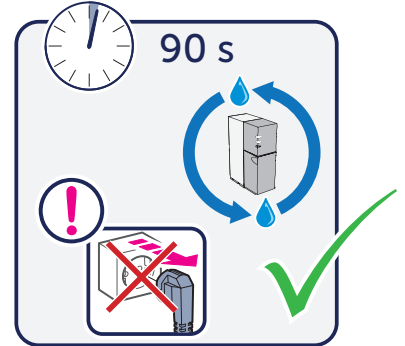
14



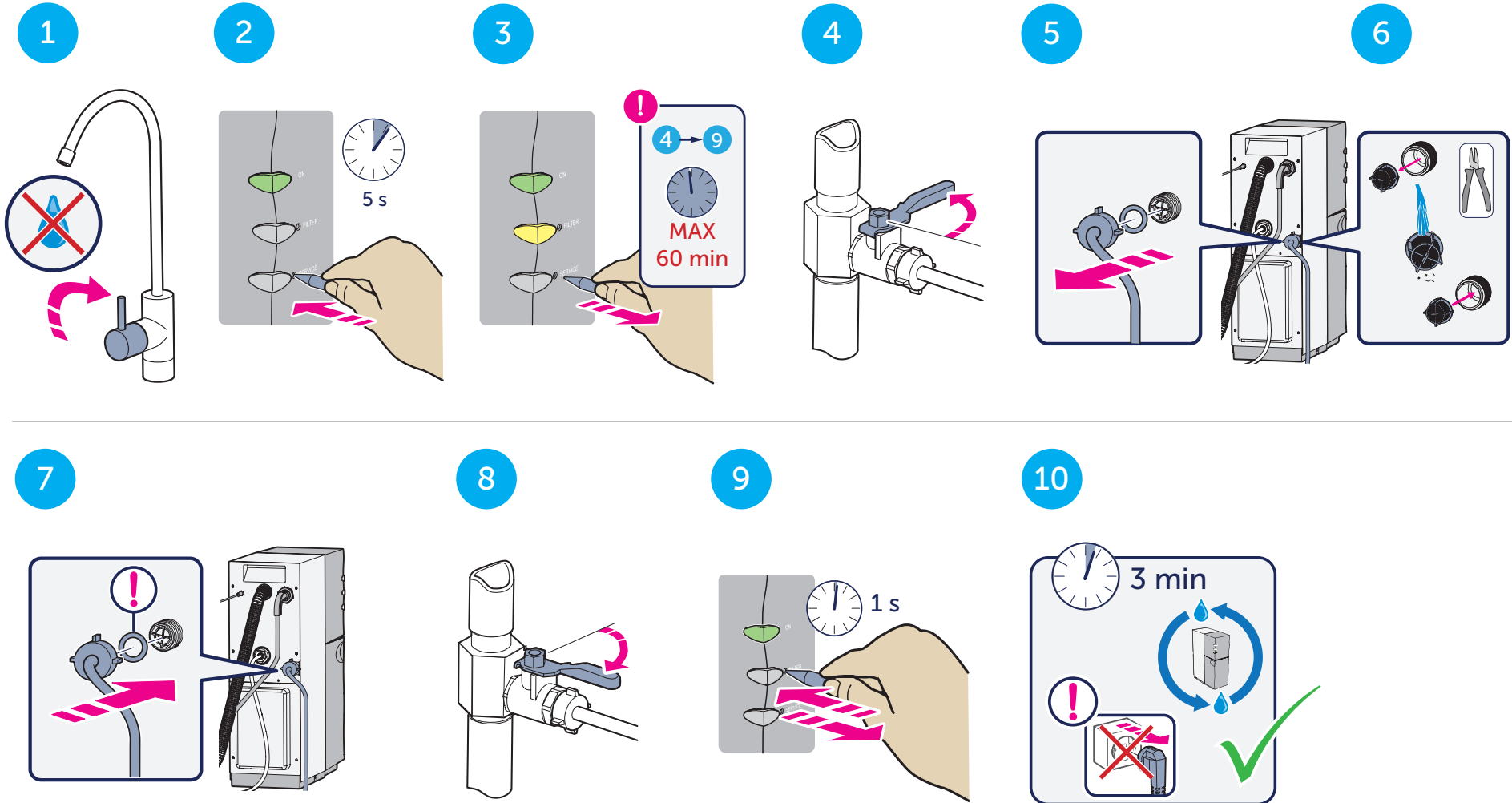
15



16



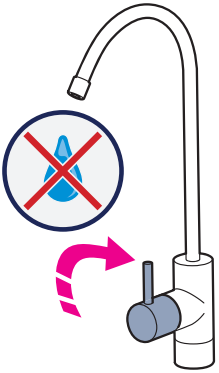
# Clean the grid filter



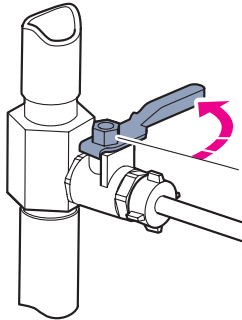


# Descaling

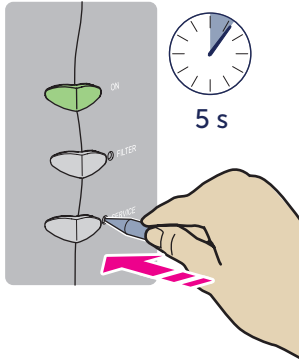
1



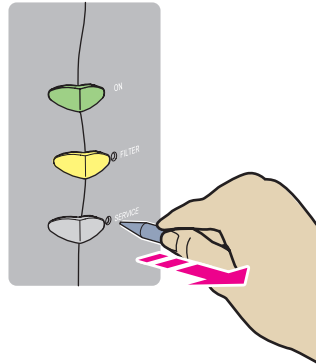
2



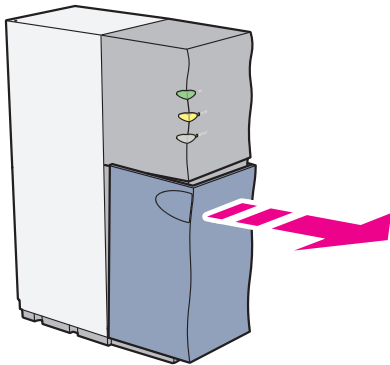
3



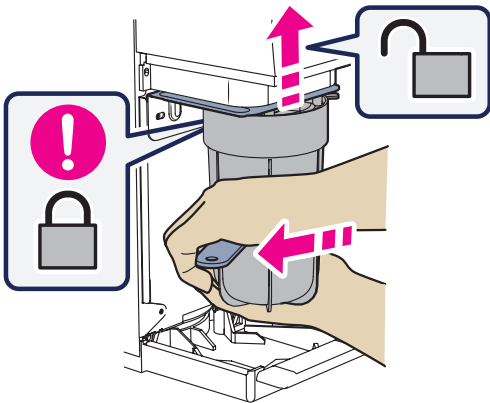
4



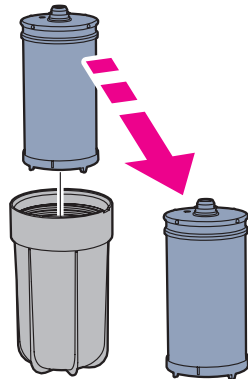
5



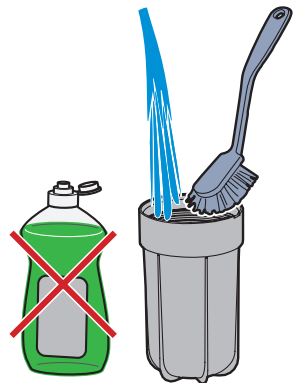
6

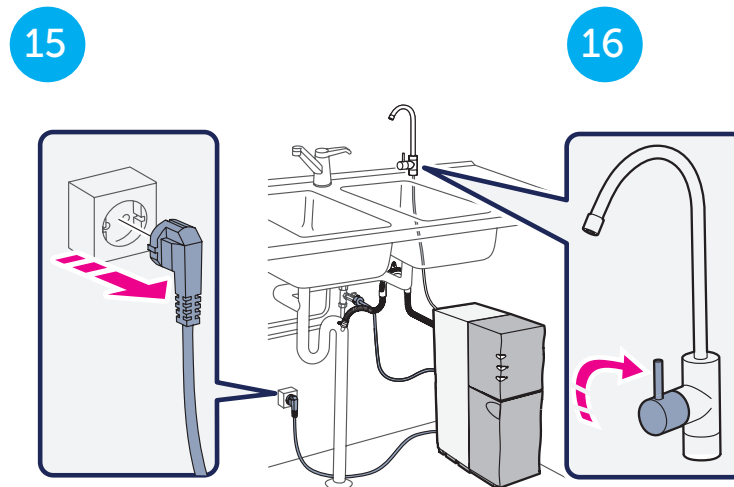
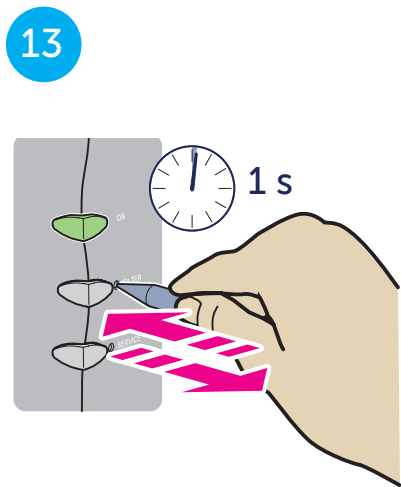
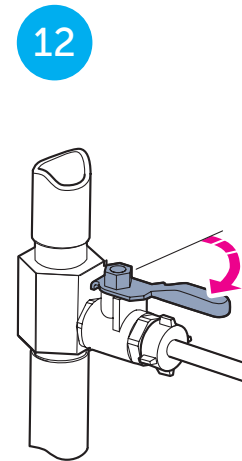
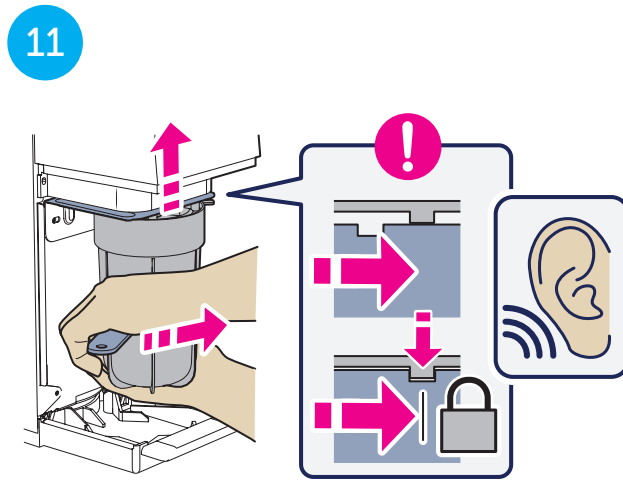
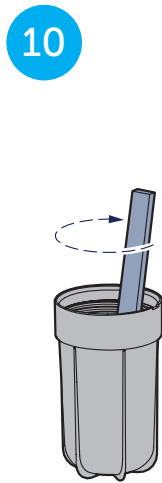
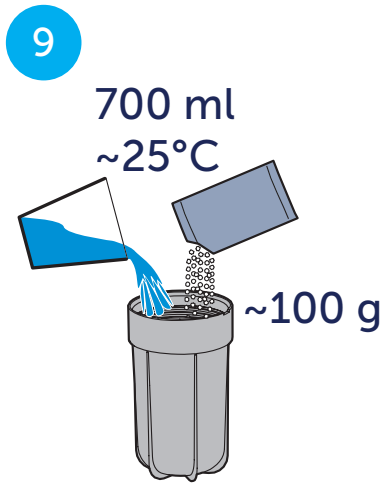


7



8

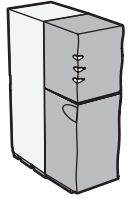




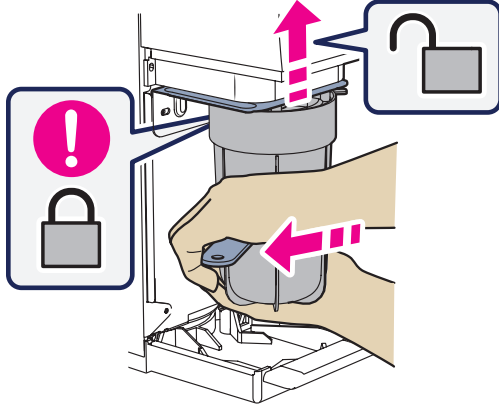
17



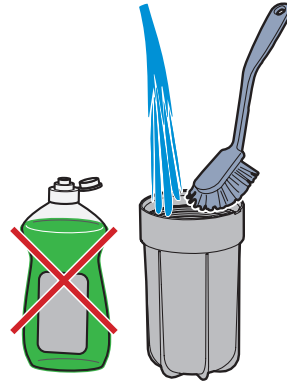
10 h



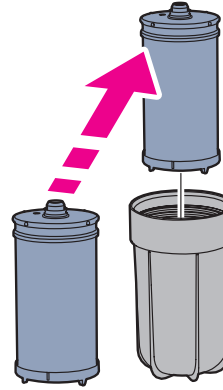
18



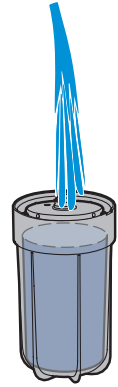
19



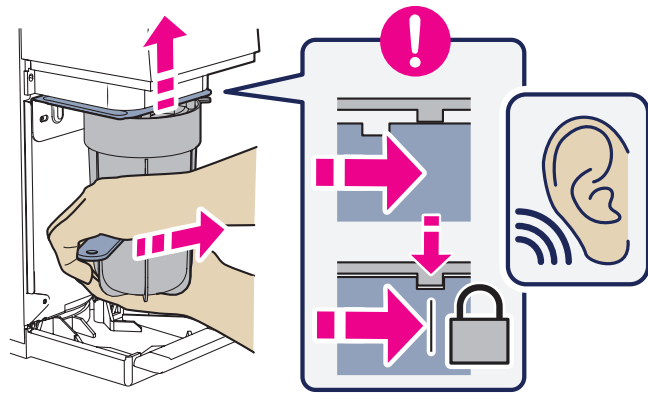
20



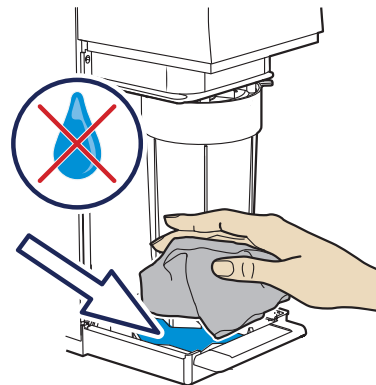
21



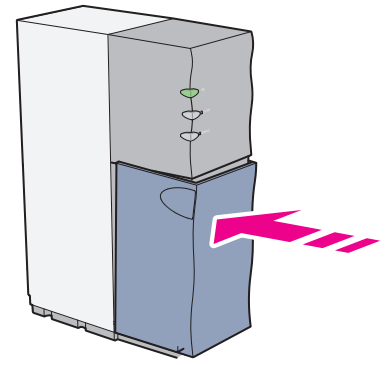
22



23



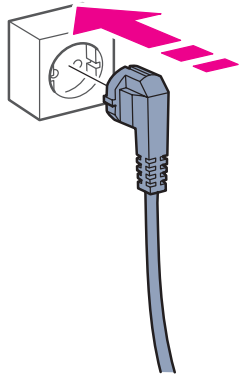
24



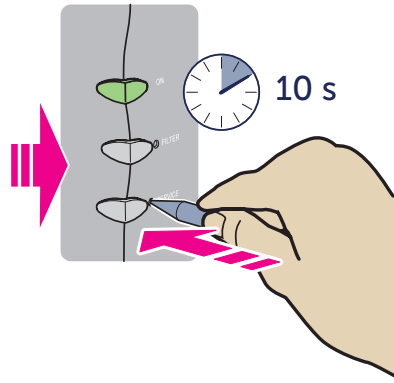
25



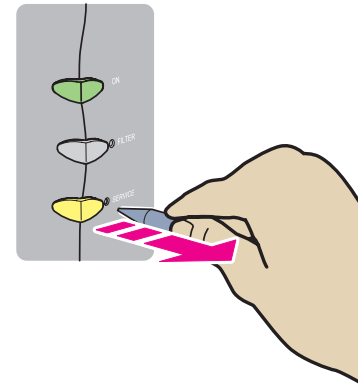
26



27



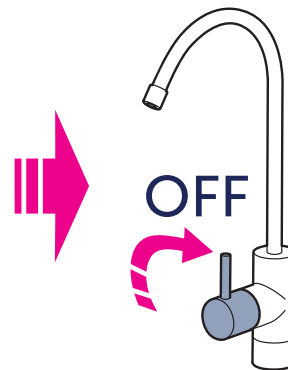
28



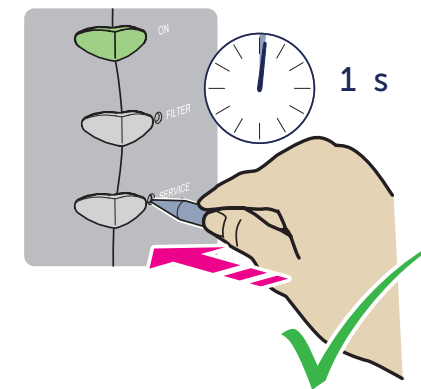
29



30



31





ENG: The installation must comply with applicable local plumbing codes and regulations.

FR: L'installation doit respecter les normes et réglementations de plomberie locales applicables

ES: La instalación de fontanería debe cumplir con la reglamentación y las normativas locales.

PT: A instalação deve cumprir as normas e os regulamentos de canalização locais aplicáveis.

IT: L'installazione deve rispettare i codici e le regolamentazioni idrauliche locali vigenti.

DE: Die Installation muss die örtlichen Vorschriften und Richtlinien für Wasser bzw. Sanitäranlagen erfüllen.

PL: Muszą być spełnione obowiązujące przepisy i regulacje dotyczące instalacji wodociągowej.

RU: Установка должна соответствовать действующим местным санитарным нормам и правилам.

SE: Installationen måste uppfylla gällande VVS-regler och -förfordningar.

FI: Asennus on tehtävä sovellettavien paikallisten LVI-sääntöjen ja -määräysten mukaisesti.

NO: Installasjonen må utføres i henhold til gjeldende praksis og bestemmelser for rørleggerarbeid.

DK: Installationen skal overholde de gældende lokale regler og forskrifter for VVS-installationer.

ZH: 必须按照适用的当地管道标准和法规进行安装。

ID: Instalasi harus mematuhi kode pipa dan peraturan setempat yang berlaku.

KO: 해당 지역 위생 공사 기준 및 규정을 준수하여 설치해야 합니다

BLUEWATER IS A SWEDISH WATER  
COMPANY WHO PURIFIES LOCAL  
SOURCES OF WATER INTO PURE,  
FRESH DRINKING WATER.  
WE'RE COMMITTED TO REDUCING  
PLASTICS IN OUR OCEANS BY  
ELIMINATING THE NEED FOR  
SINGLE-USE PACKAGING. JOIN US.

[BLUEWATERGROUP.COM](http://BLUEWATERGROUP.COM)

BLUEWATER  
Danderydsgatan 11  
114 26 Stockholm  
Sweden

[info@bluewatergroup.com](mailto:info@bluewatergroup.com)



BLUEWATER